

Los Alamos Breeding Bird Atlas

Kickoff Meeting

February 2, 2017

What is a Breeding Bird Atlas?

A breeding bird atlas is a comprehensive avifauna survey designed to reveal the distribution of breeding birds within a given geographical area. The area is divided up into square “blocks” of territory and a list of species identified as possible, probable, or confirmed breeding within each block is accumulated. The survey fieldwork is typically undertaken for several years. When the fieldwork campaign is complete, the results are compiled and published.

Atlas of the Breeding Birds of Los Alamos County

Published in 1992, the original *Atlas of the Breeding Birds of Los Alamos County* was produced by local birders based on five years of fieldwork conducted between 1984 and 1988. A grid of sixty blocks, 2.5 kilometers on a side, was defined such that it encompassed the entire county. The results of five years of fieldwork were compiled into the book that has been a cornerstone for local birding for the last 25 years.

Changes to Bird Distributions Since the 1980s

In the 30 years since the original Atlas's data were accumulated, several significant changes in bird distribution have occurred locally.

New: Eurasian Collared-Dove, White-winged Dove, Scaled Quail, and Sora
Gone: Gambel's Quail and Black-billed Magpie

Additionally, the significant fires of 1996, 2000, and 2011 have caused dramatic changes in habitat which has undoubtedly caused disruptions in the distribution of many species.

All of this leads to the conclusion that the original BBA is out of date and an update is called for!

A Second Breeding Bird Atlas for Los Alamos

- Fieldwork campaign will cover 2017-2021
- Using the same grid¹, breeding codes, and protocols as the original atlas
- Data from the second atlas will be directly comparable to the original

The 1992 BBA involved fieldwork from 47 people! We need your help to collect the data over the next five breeding seasons.

¹The 1992 BBA left a small corner of the county along the river outside of the grid; the new Atlas will add a 61st block to include this area.

How BBA Fieldwork is Done

- 1) Go out birding
- 2) Add breeding code information to each species you find that is in reasonable breeding habitat for that species
- 3) Be aware of what grid block you are in at all times
- 4) If you are birding in an area that spans multiple blocks, report the best breeding code for each species *for each block!*
- 5) Communicate your checklist to Mike and/or Mouser in one of two ways:
 - a) Share your eBird checklist(s) with the account named “la-bba”
 - b) Use a BBA field card and physically hand them over to one of us

An Introduction to the Breeding Codes

CONFIRMED BREEDING

- NY -- Nest with young
- NE -- Nest with eggs
- ON -- Occupied nest
- FL -- Recently fledged young
- FY -- Feeding young
- FS -- Carrying fecal sac
- CF -- Carrying food
- UN -- Used nest
- DD -- Distraction display

POSSIBLE BREEDING

- S -- Singing male
- H -- In appropriate habitat

PROBABLE BREEDING

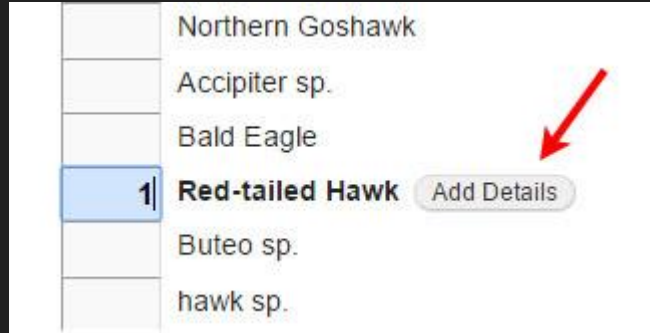
- PE -- Brood patch/physiological evidence
- NB -- Nest building*
- CN -- Carrying nest material*
- T -- Territory held for 7+ days
- C -- Courtship, display, or copulation
- N -- Visiting probable nest site
- A -- Agitated behavior**
- P -- Pair in suitable habitat
- M -- Multiple (7+) singing males
- S7 -- Singing male present 7+ days

*Do not use for wrens, woodpeckers

**Does not include mobbing owls, etc.

Adding Breeding Codes to an eBird Checklist

(if you use a computer to enter your checklists into eBird)



Adding Breeding Codes to an eBird Checklist

(if you use a computer to enter your checklists into eBird)

1 Red-tailed Hawk Hide Details


Details: X

Media: Upload up to 10 files (JPG, PNG, GIF, MP3, WAV, or M4A). Max size: 10mb for images, 250mb for audio. X

Drop Files Here...
or
Select

Add data... Age & Sex **Breeding Code** Oiled Birds Media Details

Buteo sp.



Adding Breeding Codes to an eBird Checklist

(if you use a computer to enter your checklists into eBird)

1 Red-tailed Hawk Hide Details

Details: X

Media: Upload up to 10 files (JPG, PNG, GIF, MP3, WAV, or M4A). Max size: 10mb for images, 250mb for audio. X

Drop Files Here...
or

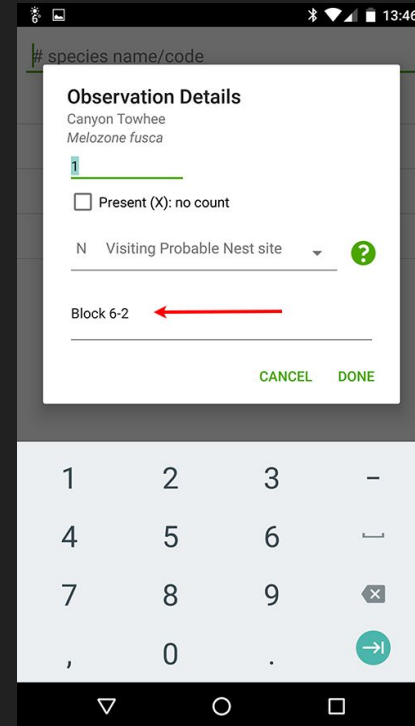
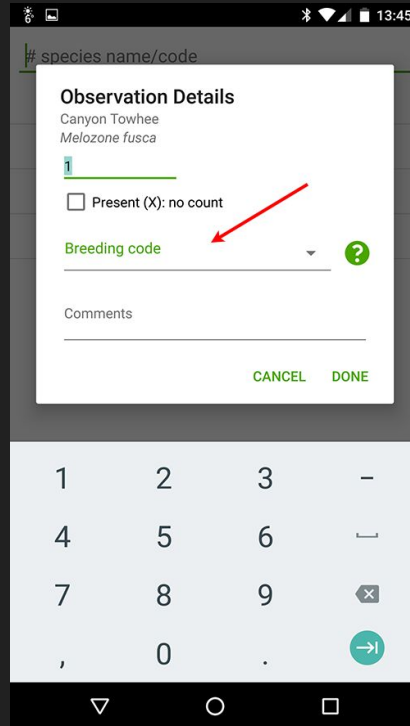
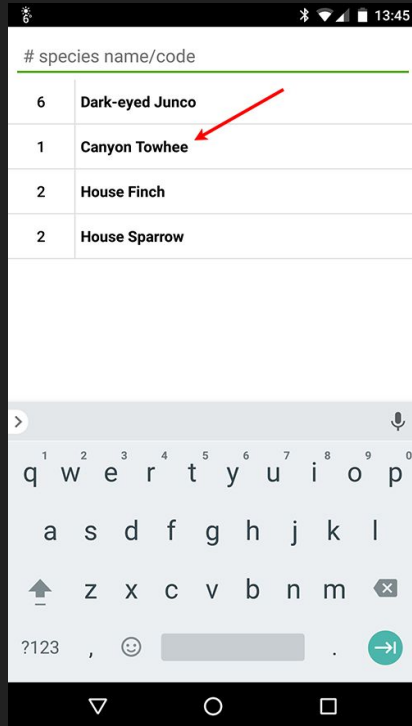
Breeding: Help... X

Add data... Age & Sex Breeding Code Oiled Birds Media Details

Buteo sp.

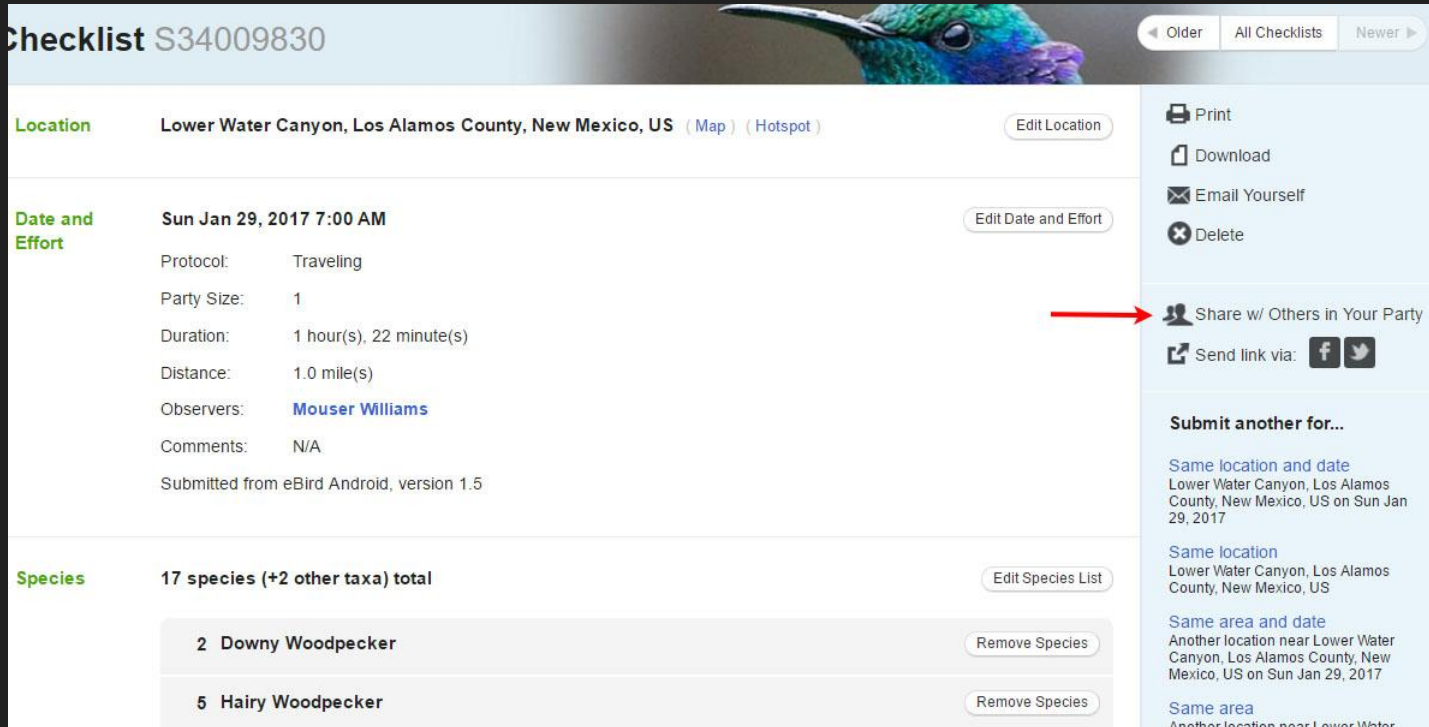
Adding Breeding Codes to an eBird Checklist

(if you use the eBird mobile app to enter your checklists)



Sharing an eBird Checklist with the “la-bba” Account

This can only be done on the computer! No ability to do this in phone app (yet?).



Checklist S34009830 Older All Checklists Newer

Location Lower Water Canyon, Los Alamos County, New Mexico, US [\(Map \)](#) [\(Hotspot \)](#) Edit Location

Date and Effort Sun Jan 29, 2017 7:00 AM Edit Date and Effort

Protocol: Traveling
Party Size: 1
Duration: 1 hour(s), 22 minute(s)
Distance: 1.0 mile(s)
Observers: [Mouser Williams](#)
Comments: N/A
Submitted from eBird Android, version 1.5

Species 17 species (+2 other taxa) total Edit Species List

- 2 Downy Woodpecker Remove Species
- 5 Hairy Woodpecker Remove Species

Print
Download
Email Yourself
Delete


Share w/ Others in Your Party (indicated by a red arrow)

Send link via: [f](#) [t](#)

Submit another for...

- [Same location and date](#)
Lower Water Canyon, Los Alamos County, New Mexico, US on Sun Jan 29, 2017
- [Same location](#)
Lower Water Canyon, Los Alamos County, New Mexico, US
- [Same area and date](#)
Another location near Lower Water Canyon, Los Alamos County, New Mexico, US on Sun Jan 29, 2017
- [Same area](#)
Another location near Lower Water

Sharing an eBird Checklist with the “la-bba” Account (if you use a computer to enter your checklists into eBird)

Checklist S34009830  Older All Checklists Newer

Share this checklist with other participants' eBird accounts.

To (username or email, comma-separated)

la-bba

Message (optional)

Contacts (click to add)

- Jerry Friedman
- Joe Fitzgibbon
- Los Alamos Breeding Bird Atlas
- Marion Stelts
- Mary Brown
- Michael Shoop

Manage My Contacts



Print

Download

Email Yourself

Delete

Share w/ Others in Your Party

Send link via:  

Submit another for...

Same location and date
Lower Water Canyon, Los Alamos County, New Mexico, US on Sun Jan 29, 2017

Same location
Lower Water Canyon, Los Alamos County, New Mexico, US

Same area and date
Another location near Lower Water Canyon, Los Alamos County, New Mexico, US on Sun Jan 29, 2017

Same area
Another location near Lower Water Canyon, Los Alamos County, New Mexico, US

Same date
Sun Jan 29, 2017

Different location and date

Hide from eBird Output ?

Location Lower Water Canyon, Los Alamos County, New Mexico, US [Map](#) [Hotspot](#) [Edit Location](#)

Date and Effort Sun Jan 29, 2017 7:00 AM [Edit Date and Effort](#)

Protocol: Traveling

Party Size: 1

Duration: 1 hour(s), 22 minute(s)

[Share Checklist](#) [Cancel](#)

Sharing a Checklist Using the Paper Atlas Card

Los Alamos Breeding Bird Atlas

Field Card 2017-2021

BLOCK _____ DATE _____

OBSERVERS _____

HOURS _____ MILES _____

Breeding Codes (from eBird):

Confirmed:

NY Nest with Young
 NE Nest with Eggs
 ON Occupied Nest (with incubating adult)
 FL Recently Fledged young (unable to fly very far—hoppers)
 FY Feeding Young
 FS Carrying Fecal Sac
 CF Carrying Food to presumed nest site
 UN Used Nest (use only if you are certain of the species)
 DD Distraction Display (feigning injury)

Possible

PE Brood Patch and Physiological Evidence (this will be used rarely)
 NB Nest Building (beware of dummy nests)
 CN Carrying Nesting Material
 T Territory held for 7+ days
 C Courtship, Display or Copulation
 N Visiting probable Nest site — (primarily hole nesters)
 A Agitated behavior -- Agitated behavior or anxiety calls from an adult
 P Pair in suitable habitat
 M Multiple (7+) singing males
 S7 Singing Male Present 7+ Days at same exact spot

Possible

S Singing male present in suitable habitat during breeding season
 H Adult in appropriate habitat during breeding season

For each species, enter all the codes that are noted for each species in the field.
 Use separate cards for different blocks, and different dates.

Example:

Bachman's Warbler	S, P, C
Ivory-billed Woodpecker	N, FY
Great Auk	NE
Passenger Pigeon	H, NB

Mallard	
Turkey Vulture	
Sharp-shinned Hawk	
Cooper's Hawk	
Northern Goshawk	
Zone-tailed Hawk	
Red-tailed Hawk	
American Kestrel	
Dusky Grouse	
Wild Turkey	
Gambel's Quail	
Scaled Quail	
Spotted Sandpiper	
Band-tailed Pigeon	
Rock Pigeon	
Eurasian Collared-Dove	
White-winged Dove	
Mourning Dove	
Flammulated Owl	
Great Horned Owl	
Northern Pygmy-Owl	
Spotted Owl	
Northern Saw-whet Owl	
Common Nighthawk	
Common Poorwill	
White-throated Swift	
Black-chinned Hummingbird	
Broad-tailed Hummingbird	
Lewis' Woodpecker	
Acorn Woodpecker	
Red-naped Sapsucker	

Williamson's Sapsucker	
Ladder-backed Woodpecker	
Downy Woodpecker	
Hairy Woodpecker	
Three-toed Woodpecker	
Northern Flicker	
Olive-sided Flycatcher	
Western Wood-pewee	
Hammond's Flycatcher	
Dusky Flycatcher	
Gray Flycatcher	
Cordilleran Flycatcher	
Black Phoebe	
Say's Phoebe	
Ash-throated Flycatcher	
Cassin's Kingbird	
Violet-green Swallow	
Cliff Swallow	
Gray Jay	
Steller's Jay	
Woodhouse's Scrub-Jay	
Pinyon Jay	
Clark's Nutcracker	
Black-billed Magpie	
American Crow	
Common Raven	
Mountain Chickadee	
Juniper Titmouse	
Bushtit	
Red-breasted Nuthatch	
White-breasted Nuthatch	

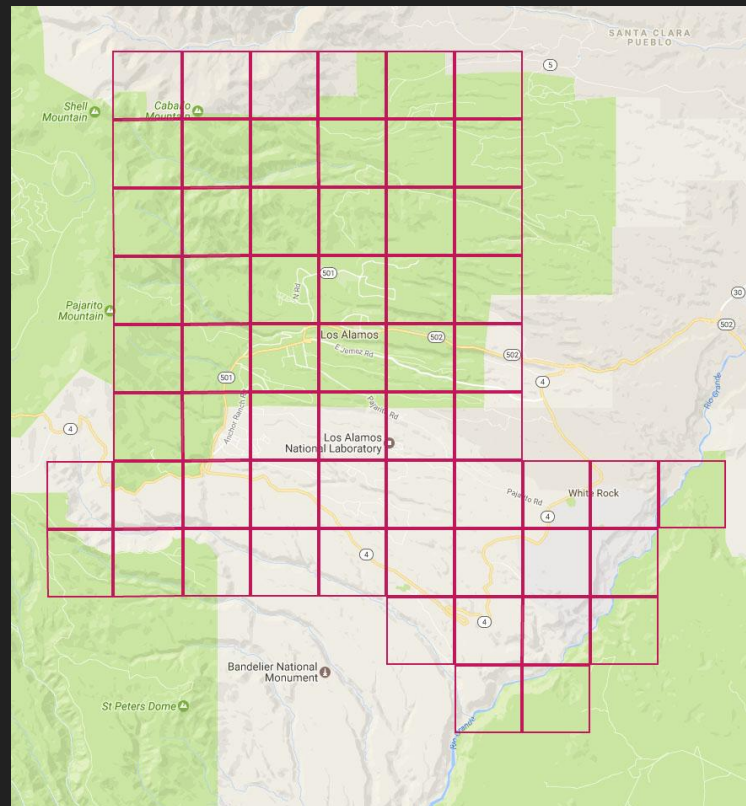
Finding Your Location on the Grid

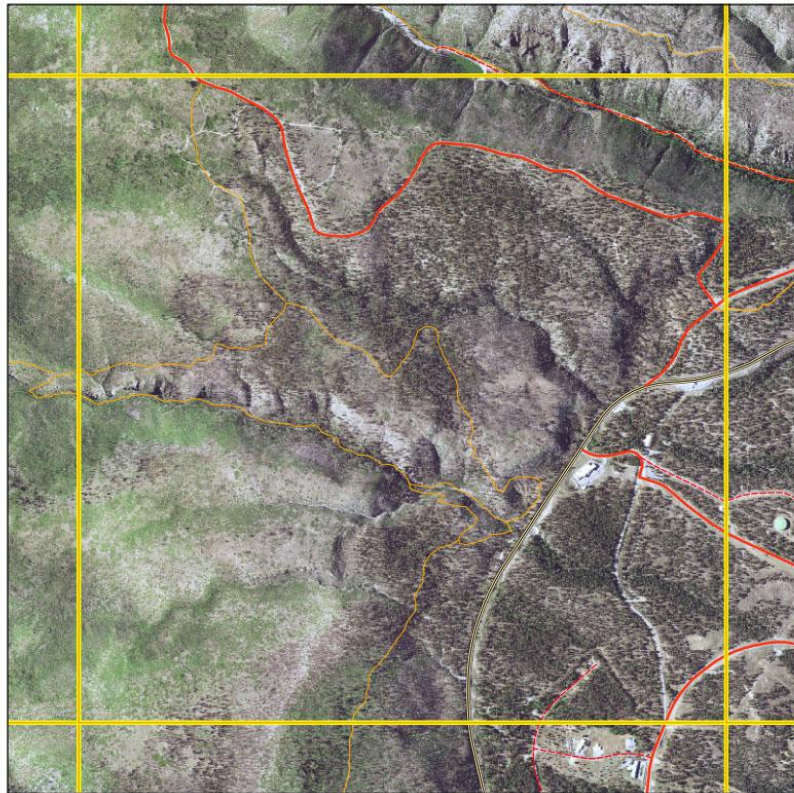
Go to the BBA webpage:

<http://losalamosnature.org/birding/bba/>

There you can open a map in Google Maps on your phone that will plot your phone's present location on the grid. You can also download a KMZ version of the grid for use in Google Earth.

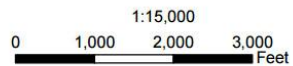
Clicking/tapping on any point within the grid will bring up a dialog showing the block number you clicked on which is how you should refer to the block in your reports.



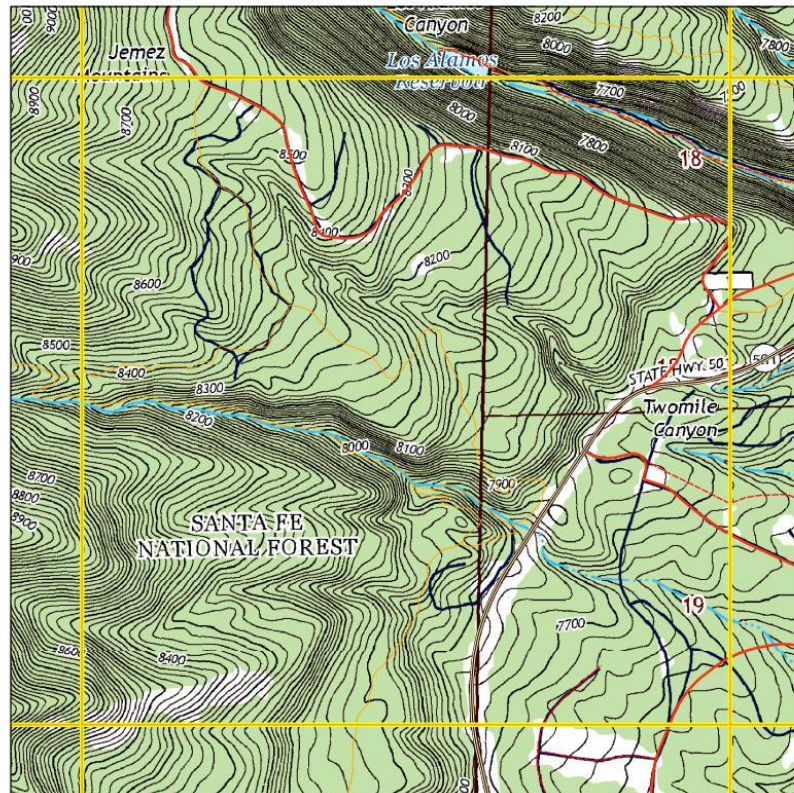
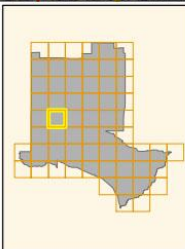


Los Alamos Breeding Bird Atlas v2

Grid 52



Imagery courtesy of USDA, NAIP 2014.
Topographic maps courtesy of USGS, 2013.

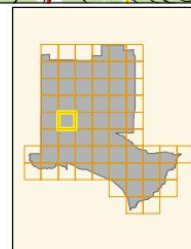
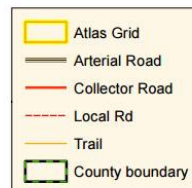


Los Alamos Breeding Bird Atlas v2

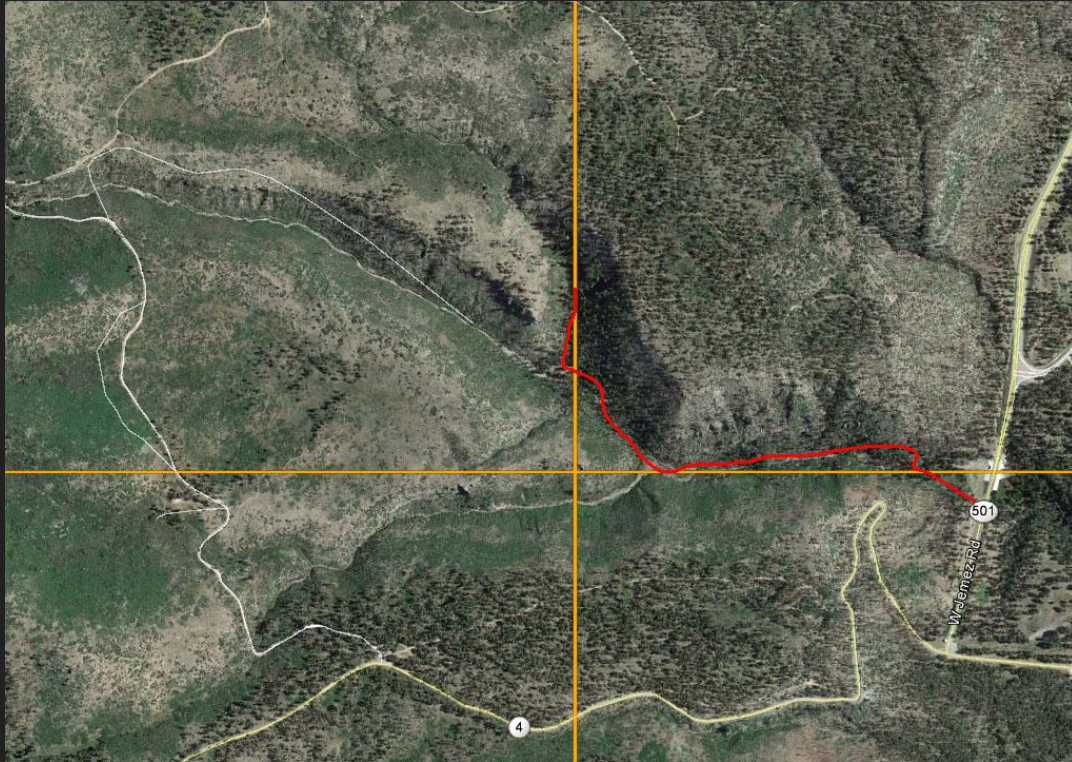
Grid 52



Imagery courtesy of USDA, NAIP 2014.
Topographic maps courtesy of USGS, 2013.



Dealing with Hikes that Enter Multiple Blocks



- Separate checklists/cards for each block OR
- One checklist/card for the whole hike but put notes in each species' details for the best breeding code found in each block crossed.

Upper Water Canyon

The Website

<http://losalamosnature.org/birding/bba/>